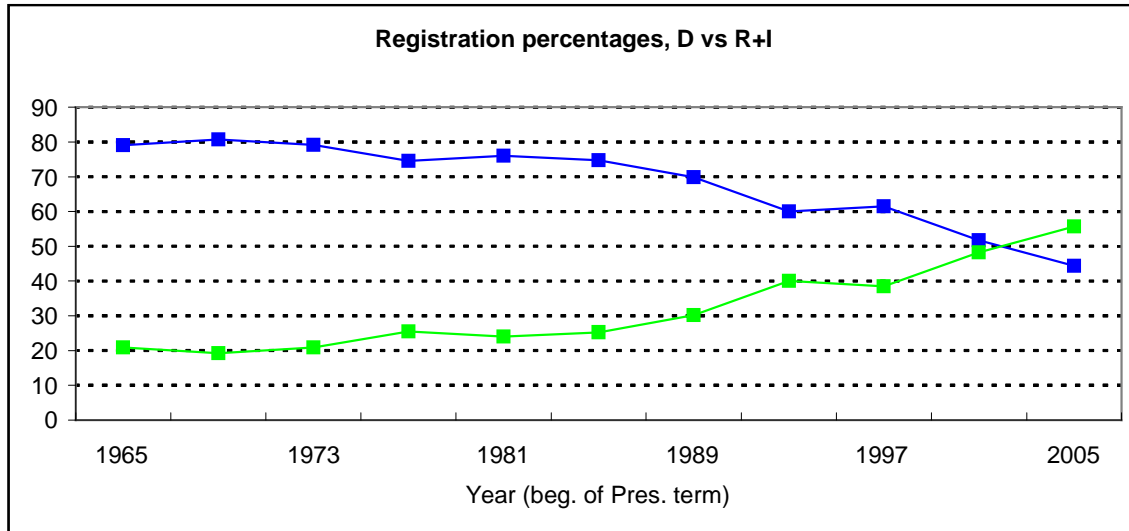


THE TIDE HAS TURNED!
Marion County Voter Roll, by Year of Registration (4-year increments)
as of September 2006



As of 2005, the Democratic Party was, for the first time in over 70 years, a minority of all NEW registrations! Since 2005, they have been only 44%. Within the majority of NEW registrations, 28% are Republican and 28% are no party or independent.

Marion County is still at an overall 23% Republican + plus 11% independent (vs 66% Democrat), but that will steadily increase, so that (analyzing the above demographic picture) we can envision a time within the next few years when every county-level race will be competitive.
